

Cambridge A 16+ additional questions solutions

1)  $\frac{-x}{3+2x}$

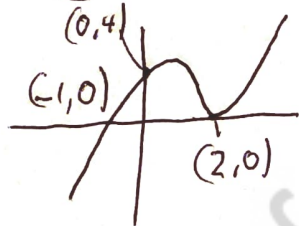
2)  $(1776\pi \approx) 5580 \text{ cm}^3$

3)  $88.6^\circ$

4)  $y = \frac{5}{7}x + 3$

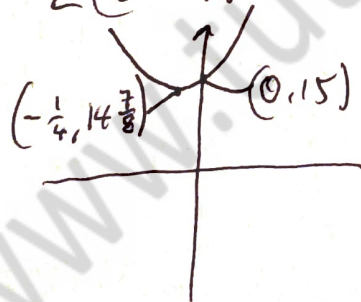
5) a)  $a = -3$

b) ~~g(x)~~  $f(x) = (x-2)^2(x+1)$



c)  $n = 64$

d) i)  $2\left(x + \frac{1}{4}\right)^2 + 14\frac{7}{8}$



ii)  $y = 1 \pm \sqrt{120}$